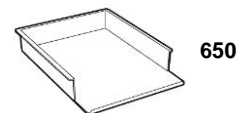
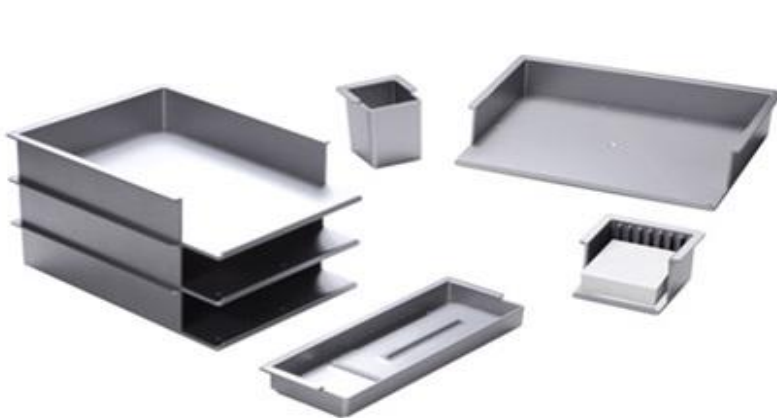
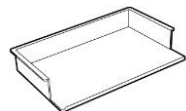


product name	STANDARD wall and desktop set
design	Julian Brown
year introduction	2004
codes & descriptions	dimensions
650 - front letter tray	27,0 x 34,5 x h 6,5 cm
655 - side letter tray	35,5 x 26,0 x h 6,5 cm
610 - pencil tray	35,5 x 12,5 x h 3,5 cm
632 - pencil cup	9,0 x 9,0 x h 9,5 cm
640 - memo pad-holder	12,5 x 12,5 x h 6,5 cm (100 pages pad included)
B080 - B100 - B120 - 1 level wall beam	w 80-100-120 x h 6,0 x thick. 1 cm
C080 - C100 - C120 - 3 levels wall beam	w 80-100-120 x h 20,5 x thick. 1 cm
materials & finishing	trays, cup, pad-holder in engineering polymer (ABS) batch-dyed or aluminium painted with thermoplastic acrylic paint wall beams in natural anodized aluminium
recyclability	100%
maintenance	wash with water and neutral soap, wipe carefully with a soft cloth, do not use alcohol, chemical products or abrasives.
packing	in singles carton boxes (letter trays 2 pieces per box)



650



655



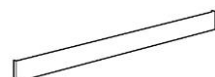
610



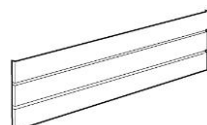
632



640



B080 - B100 - B120



C080 - C100 - C120